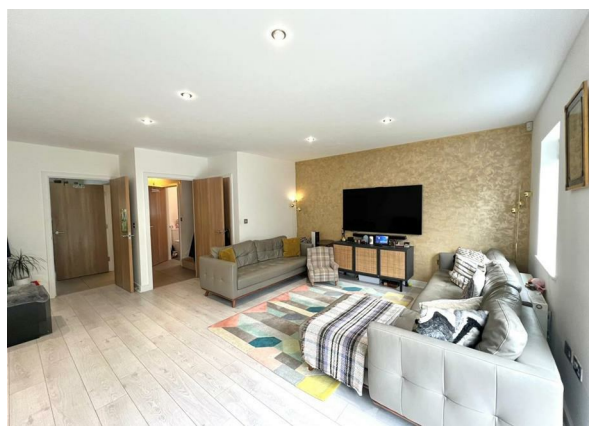


5 Lindale Close, Ilford, IG4 5FB  
£3,600 Per Month

COMPLETION  
SALES & LETTINGS



5 Lindale Close, Ilford, IG4 5FB

£3,600 Per Month

Council Tax Band: F

Nestled in the desirable Lindale Close, Ilford, this impressive detached house offers a perfect blend of modern living and family-friendly amenities. With a generous space of 1,479 square feet, this property boasts five spacious double bedrooms, ensuring ample room for family and guests alike. The master bedroom features an en-suite bathroom, providing a private retreat for relaxation.

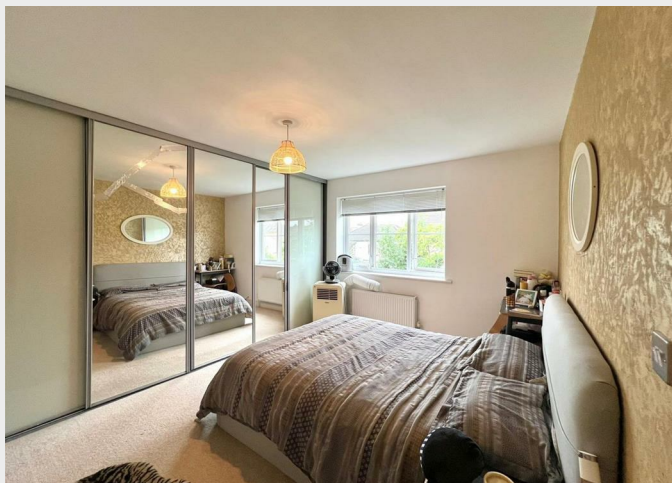
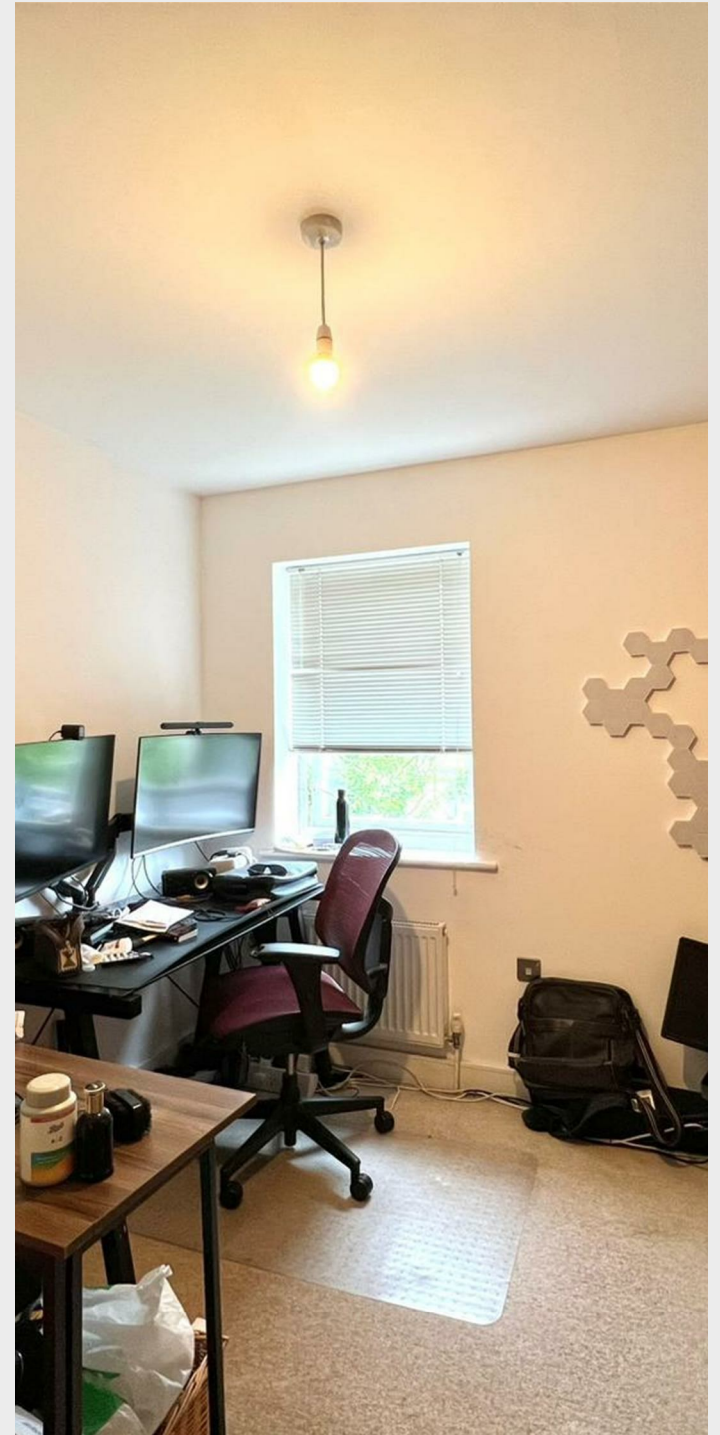
Constructed in 2012, the house is situated in a sought-after private close, enhancing both security and tranquillity. Residents benefit from private parking and a garage, making it convenient for those with vehicles. The secure cul-de-sac setting is ideal for families, offering a safe environment for children to play.

The property is well-connected to public transport, providing easy access to central London, making it an excellent choice for commuters. Additionally, it falls within the catchment area of reputable schools, ensuring quality education options for families.









337 Forest Road  
 London  
 E17 5JR  
 02085277007  
 enquiries@completion.co.uk  
 completion.co.uk

